

NAME \_\_\_\_\_ INDEX \_\_\_\_\_

DATE \_\_\_\_\_ SIGNATURE \_\_\_\_\_

AGRICULTURE 443/1  
FORM FOUR  
2<sup>ND</sup> TERM 2019  
2 HRS.

Kenya Certificate of Secondary Education  
AGRICULTURE 443/1  
FORM FOUR 2<sup>ND</sup> TERM EXAMINATION 2019

Instructions

- This paper consists of three sections A, B and C
- Answer all the questions in sections A and B
- Answer any two questions in section C

**For Examiner's Use Only**

Section	Questions	Maximum marks	Candidate score
A	1 - 15	30	
B	16 - 18	20	
C	19- 21	40	
	Grand total	90	

*This paper consists of 9 printed pages. Candidates should check to ascertain that all pages are printed as indicated and that no questions are missing.*

**SECTION A (30 MARKS).**

**Answer all the questions in spaces provided**

1. **State four advantages of secondary tillage.** (2marks)

---

---

---

---

2. **Give four qualities of a good planting material for selection** (2 marks )

---

---

---

---

3. **State four advantages of using polythene sleeves.** (2 marks)

---

---

---

---

4. **List four methods of budding.** (2 marks )

---

---

---

---

5. **State four qualities of green manure crops.** (2 marks)

---

---

---

---

6. **Give four roles of nitrogen.** (2 marks )

---

---

---

---

7. State four factors which contribute to the competitive ability of weeds. (2marks)

---

---

---

---

8. Which four factors determine the choice of pipe to use in the farm? (2marks)

---

---

---

---

9. Give two examples of each of the following classes of water pipes (1 mark)

a) hose pipes.

---

---

b) Metal pipes. (1 mark)

---

---

10. a) State two signs of attack by maize weevils on maize. (1 marks )

---

---

b). Classify maize weevils based on the place where they are found / habitat. (1 mark)

---

---

11. Give four advantages of rotational grazing (2 marks)

---

---

---

---

12. State four causes of failure in pasture establishment. (2 marks)

---

---

---

---

13. State four disadvantages of communal land tenure ? (2marks)

---

---

---

---

14. What are four qualities of a good farm manager ? (2 marks)

---

---

---

---

15. State four marketing functions of Kenya Cooperative Creameries ( KCC). (2 marks)

---

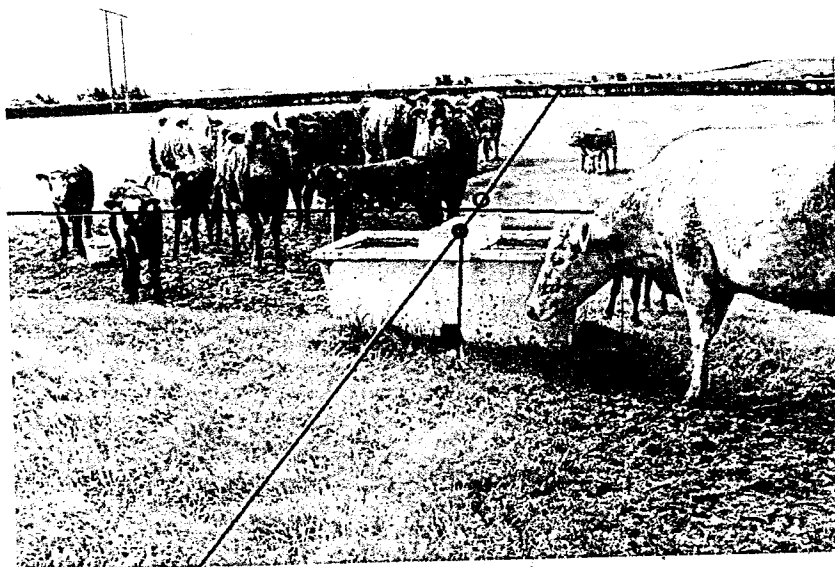
---

---

---

**SECTION B ( 20 marks)**

16. Answer ALL questions on this section in the spaces provided  
Study the diagram below which illustrates a grazing system and answer the questions that follow



a ) Identify the grazing system illustrated above (1 mark)

---

---

b) State five advantages of the grazing system illustrated above. ( 5 marks)

---

---

---

---

---

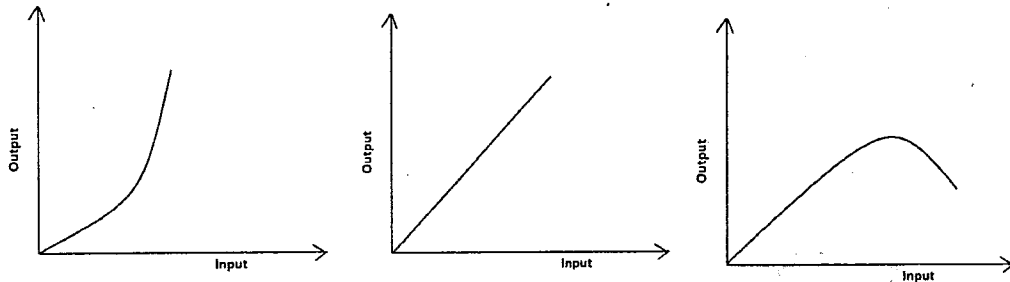
---

c) Name two other methods that can be used to effect the system of grazing. ( 2 marks )

---

---

17. Study the diagrams below showing different production function curves in agricultural economics and answer the questions that follow



a) Identify the production function curves labelled A and B. (2 marks)

A

---

B

---

b). i) What does the law derived from the production function labelled C state ? (1 mark l)

---

---

ii) State the importance of the derived law stated in ( b ) I) above to a farmer. (1 mark)

---

---

c) i) Which of the three production function curves is rare in agriculture. (1 mark )

---

---

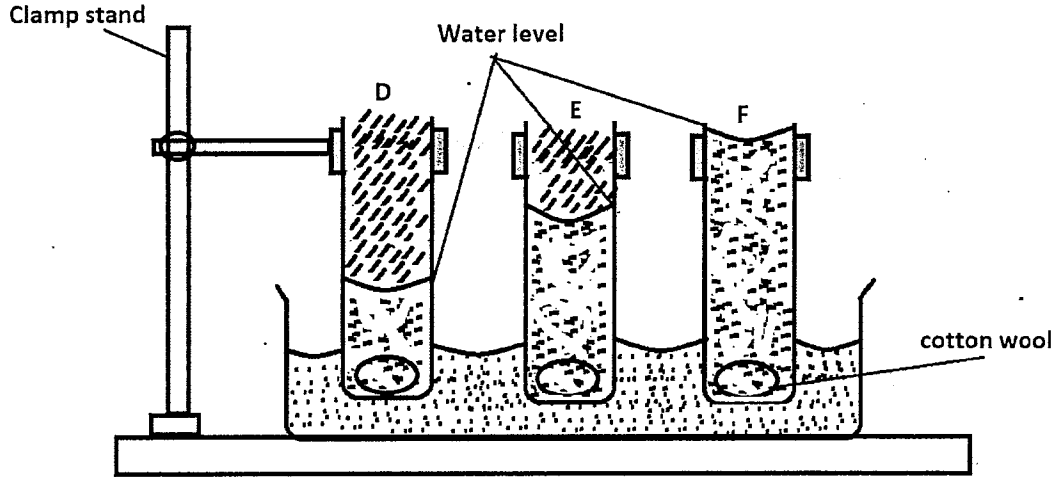
- ii) Give a reason for your answer in (c) I) above. (1 mark)

---



---

18. The diagram below illustrates an investigation on a property of soil using soil samples labelled D, E and F and the observations made after 24 hours. Study it carefully and answer the questions that follow



- a) What was the aim of the experiment ? (1 mark)

---



---

- b). Name the three types of soil based on one observation made in each. (3 marks)

D

---

E

---

F

---

- c) State two ways on how the structure of soil type D can be improved for growing maize (2 marks)

---



---

**SECTION C( 40 marks)**

Answer any TWO questions in this section

19. Describe the production of tomatoes under the following sub headings  
a) Nursery bed preparation (4marks)

---



---



---



---

b) Establishment in the nursery (3marks)

---

---

---

---

c) Management of seedlings in the nursery (5marks)

---

---

---

---

---

---

d) Transplanting of seedling (8marks)

---

---

---

---

---

---

---

---

---

---

20.a) Prepare a balance sheet for Mr. Okusis farm from the following information extracted from his farm records on 31-12-2018. (13 marks)

Cash at hand	Kshs. 5 000/-
Cash in bank	Kshs. 5 0000/-
Bank overdraft from Equity	Kshs. 20 000/-
Debts payable to cooperative society.	Kshs.20 000/-
Debts receivable from kcc.	Kshs. 15 000/-
Tax payable to KRA.	Kshs 20000
Dairy cattle	Kshs 60000/-
Poultry comprising 100 layers	Kshs. 20000/-
Maize in store	Kshs . 40000/-
Beans in store.	Kshs.8000/-
Inputs in store.	Kshs. 10 000/-
Tractor.	Kshs.350 000/-
Land.	Kshs. 800 000/-
AFC loan.	Kshs. 300 000/-



